

News You Can Use

For Montgomery County Master Gardener Volunteers

December 2016

We are Ohio State University Extension trained volunteers empowered to educate others with timely research-based gardening information.



2016 OSUE MGV HOURS (3rd announcement)

The timeline to enter 2016 volunteer hours at approved OSUE volunteer sites / projects and continuing education hours for 2016 has passed. If you could not record your hours because of an issue and need assistance, call the OSUE office. Hours needed:

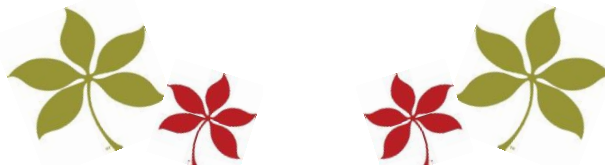
- **OSUE Master Gardener Volunteer Class of 2015** - 50 volunteer hours at approved site or project – You have 50 hours of education recorded
- **Active OSUE Master Gardener Volunteers** - 20 volunteer hours at an approved site or project and 10 continuing education hours
- **Inactive OSUE Master Gardener Volunteers** need to contact either Suzanne Mills-Wasniak, mills-wasniak.1@osu.edu or Theresa Ford, ford.835@osu.edu regarding input of their volunteer or continuing education hours.

2017 RECERTIFICATION

The 2017 Recertification Process was activated Thursday, December 15, 2016. Please consider recertifying as a volunteer for the 2017 program year.

When you log in to the VMS, you will see a message telling you that you need to electronically complete three (3) steps. Click on "Please Complete The Documents Now," and the process begins. **NOTE:** If you are not selecting to recertify or wish to change your status, please complete the first link/section only.

Please **complete the 2017 Recertification Process by Wednesday, January 6, 2017**. If you do not complete the recertification process by January 25, 2017, your status will be change to "inactive." Call Suzanne at 937-224-9654 ext. 109, if you have questions or concerns.



Submit information for "News You Can Use" to Gail Carone: getcarone@hotmail.com



“News You Can Use” Committee Reports

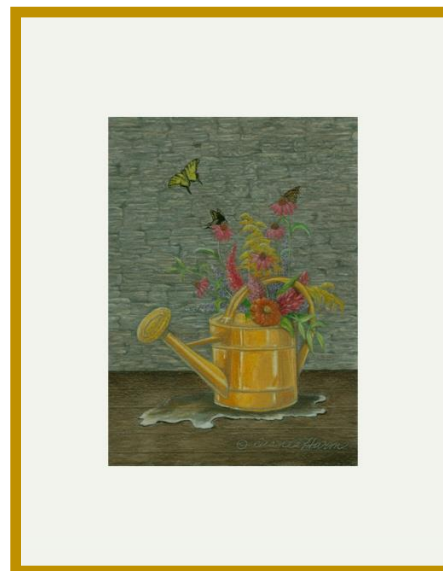
On November 3rd, we celebrated the 20th Anniversary of the Greater Montgomery County Master Gardener Association (GMCMGA) at the Annual Banquet held at The Presidential Banquet Center in Kettering, Ohio.

Our guest speaker was Pete Lane, OSU ANR Agent and County Extension Chair (retired) and former Montgomery County MGCV Coordinator (1999-2005). His informative powerpoint presentation about “The National Parks” system covered not only a history lesson on the origin of the National Parks, but also, we were treated to a retrospective family photo album. Pete, along with his wife, Rita (MGV) and their children have visited half of the National Parks and Historical Sites and Monuments throughout the United States. As the National Parks celebrated its 100th Anniversary in 2016, it was a pleasure to be taken on this visual journey courtesy of the Lane family.

The Program Committee procured a wonderful venue to help us celebrate our 20th Anniversary. The food was exceptional, the setting was autumnal elegance, all in all, a delightful evening.

The Program Committee also had our 2017 packets available for pick-up. The packet included: GMCMGA Association handbook, pocket calendar and the 2017 continuing education programs offered through the GMCMGA, with program descriptions, dates and registration information included. Please review the programs and sign up for the classes you want. Registration is due by February 15, 2017. *Please note many of the classes can accommodate a limited number of participants, so register early to reserve your spot.*

If you have not received your packet, please contact Jeanne Keffer at jmkeffer@sbcglobal.net.



Susan Pearson was awarded the
“2016 Golden Watering Can Award”.
Congratulations, Susan!

Original Artwork courtesy of Dianne Harm MGCV

Volunteer Committee

MILESTONES FOR 2015 HOURS

500 Hours exceeded for the first time in 2015:

Karen Beal, Charles Dickerson and Sherry Leighty

750 Hours exceeded for the first time in 2015:

Susan Baker, Jane Falck, Mikki White and Carol Williams

1000 Hours exceeded for the first time in 2015:

Judy Payne

1250 Hours exceeded for the first time in 2015:

Jan Davis, Yvonne Dunphe, Dianne Harm and Bob Neff

1750 Hours exceeded for the first time in 2015:

Janet Hickey

Hello Fellow Master Gardener Volunteers,

With Christmas around the corner, it's easy to forget paying membership dues before the Dec. 31 deadline.

So, this is a gentle reminder to pay your membership early in case you forget during the holiday rush.

*If you are an active or (inactive member who plans to recertify) or a 2015 Intern who **wishes** to join the Greater Montgomery County Master Gardener Association, please remit a check of \$25.00 (\$15.00 membership dues plus a \$10.00 State Support fee) made payable to GMCMGA and mailed to GMCMGA, c/o Treasurer, P.O. Box 292421, Stroop Road Facility, Kettering, OH 45429.*

You may also submit your check to the Treasurer at our upcoming special Membership meeting on Thursday, December 8 at 9:30 a.m., OSU Extension.

We look forward to seeing all of you in 2017,

Janet Hickey



THE OHIO STATE UNIVERSITY

COLLEGE OF FOOD, AGRICULTURAL,
AND ENVIRONMENTAL SCIENCES

CFAES provides research and related educational programs to clientele on a nondiscriminatory basis. For more information:
<http://go.osu.edu/cfaesdiversity>.

OHIO STATE UNIVERSITY EXTENSION

Montgomery Co. Master Gardener Volunteer Program

December 2016

Sunday	Monday	Tuesday	Wednesday	Thursday	Friday	Saturday
				1	2	3
4	5	6	7	8	9	10
				GCMGA Special General Membership Meeting 9:30-11 am OSUE		
11	12	13	14	15	16	17
The deadline to enter your hours into the VMS was Dec. 15th!						
18	19	20	21	22	23	24
					<i>OSUE Office Closed</i>	
25	26	27	28	29	30	31
 Christmas Day	<i>OSUE Office Closed</i>				 <i>Bring on the NEW YEAR!</i>	<i>New Year's Day</i>